

TECHNICAL DATA SHEET (TDS)

IDEA RAPID COLOR

ID Product Code 087

Pag | 1

ANTIQUÉ LOOK DEEP ENHANCER for ABSORBING STONES

Water & Oil Proof for limestone, sandstone, cement & stones.



Product description:

IDEA RAPID COLOR is a product specifically studied to protect, enhance color and give an antique look to very absorbing stones, i.e. Sand Stone, Limestone, Pietra di Lecce, Pietra di Vicenza, etc.

IDEA RAPID COLOR deeply enhances the color of treated material and gives a shiny satin finish, it works as a protective against stains due to oils, greases, humidity and prevents formation of mildew.

Chemical characteristics:

Appearance	Liquid
Color	Yellowish transparent
Odor	Characteristic
Specific gravity at 20° C (68° F)	0,90±0,02
Hydro-solubility	Not soluble
pH	N.A.
Drying time at 20°C (68° F)	10-20 minutes*
Complete drying time	8 hours*
Complete polymerization	2 days*
U.V. Resistance:	
Long waves 365 nm	Very good (no changes after 24 hours exposure)
Short waves 254 nm	Very good (no changes after 24 hours exposure)
Shelf life at 20°C (68° F)	24 months in original container

* indicative values, depending on the nature of the material and environmental conditions

Instruction for use

Surface must be clean and dry; stains, mildew, crusting must be scraped off otherwise they will be harder to remove after protection. Application can be done by brush, by roller or by spray gun. It is suggested, when possible, to apply the product by brush because it allows the product to penetrate better into the stone. Application of IDEA RAPID COLOR by brush, making pressure, will facilitate penetration into frames and cavities. Continuously repeat the application, without interruption, until the stone has been saturated (the stone does not absorb further product).

During the application and subsequent drying, the temperature of the substrate should be between 10 and 30°C. In case of application on floor with underfloor heating system, turn off heating and allow the stone to cool completely.

Application tools



Brush



Roll



Cloth



Mop



Fleece



DISCLAIMER All data indicated in this leaflet are the results of tests and experiments carried out in our laboratories and through reliable operators in the stone business and have to be considered reliable. Because of the many factors which can influence them, the information here reported do not constitute implicit or formal guarantees. The end user undertakes the responsibility in the usage of the product making sure to experiment the product characteristic as preventive measure.



TDS N°

087

TECHNICAL DATA SHEET (TDS)

Suggestion for use and recommendations:

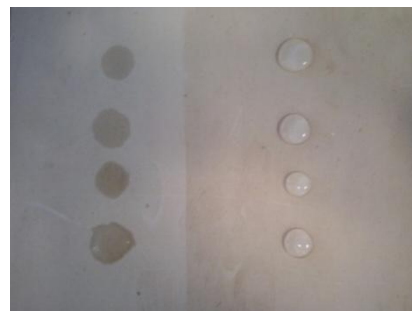
- We recommend applying the product until complete saturation of the stone. Taking care to apply it wet on wet, ie without leaving the first coat to dry, but continuing the application.
- Do not dilute the product with water or other solvents because the preparation is ready for use.
- The material to be treated must be completely dry.
- Once treated, the stone must be left to dry for 48 hours to complete polymerization.
- In the case of treatments for statues, vases or decorative items, pay close attention to cavities.
- Before use carefully read the recommendations printed on the tin
- Make a test before use

Pag | 2

Application surfaces

Limestone, Sandstone, Cement and very absorbent stones.

Example of application



Coverage

For the protection of limestone, one liter of product can treat 8 to 12 sqm (80/140 sq.ft.), depending on the absorption and degree of finish of the material.

Maintenance of the treated surface

For proper maintenance of the treatment we recommend to carry out periodic washing with our LEM-3 neutral detergent, diluted with water according to the amount of dirt to be removed, without using abrasive tools. The treatment has a variable duration, depending on weather condition it is exposed to and wear of the material. If necessary, it is possible to reapply IDEA RAPID COLOR above a previous application.

Safety procedures

As far as the proper working procedures is concerned, we recommend to consult Material Safety Data Sheets issued according to E.U. rules and to follow your national laws concerning safety in the working place. MSDS is available on our web site www.bellinzoni.com



DISCLAIMER All data indicated in this leaflet are the results of tests and experiments carried out in our laboratories and through reliable operators in the stone business and have to be considered reliable. Because of the many factors which can influence them, the information here reported do not constitute implicit or formal guarantees. The end user undertakes the responsibility in the usage of the product making sure to experiment the product characteristic as preventive measure.



TDS N°

087

TECHNICAL DATA SHEET (TDS)

Packing

Item N°	Packing	Pcs	Size and weight packaging	Carton per pallet (sea transport)
087CNVA001	1,00 lt (33,82 fl.oz.)	12	cm 36x27x26 – kg 11,50	24
087CNVA005	5,00 lt (1,32 Gal)	2	cm 23x40x26 – kg 9,00	27
087CNVA025	25,00 lt (6,60 Gal)	1	cm 50x32Ø – kg 22,00	16
087CNVA200	200,00 lt (52,80 Gal)	1	cm 90x60Ø – kg 168,00	2

Pag | 3

The composition of the tins is Steel (ACC). After use, comply with the local and national regulations currently in force regarding recycling. Our packing is conformed as per U.N. rules for inland transport (A.D.R.) and by sea (I.M.O.) for transportation via air refer to updated rules (I.A.T.A.). For further information regarding transport please check MSDS.

H.S. Code

32.08.1010

Trademark and Origin of the good

BELLINZONI® is a registered trademark of Bellinzoni company. The law considers a trademark to be a form of property and any misuse can be persecuted by law. Bellinzoni s.r.l. declares that our product IDEA RAPID COLOR is **MADE IN ITALY**.



DISCLAIMER All data indicated in this leaflet are the results of tests and experiments carried out in our laboratories and through reliable operators in the stone business and have to be considered reliable. Because of the many factors which can influence them, the information here reported do not constitute implicit or formal guarantees. The end user undertakes the responsibility in the usage of the product making sure to experiment the product characteristic as preventive measure.



TDS N°

087